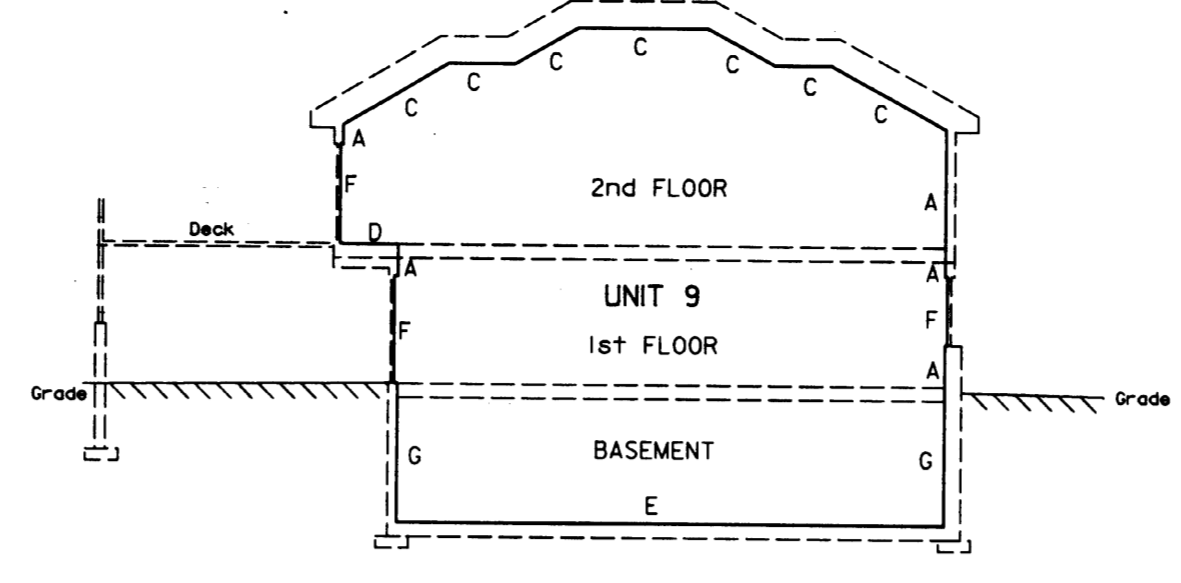
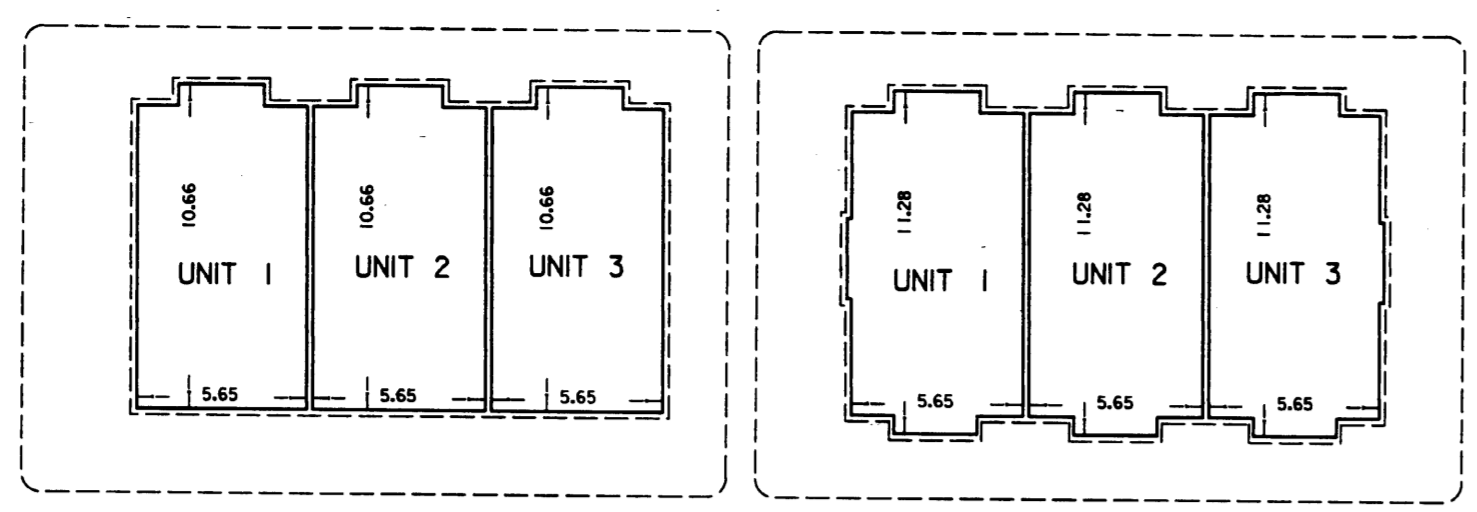
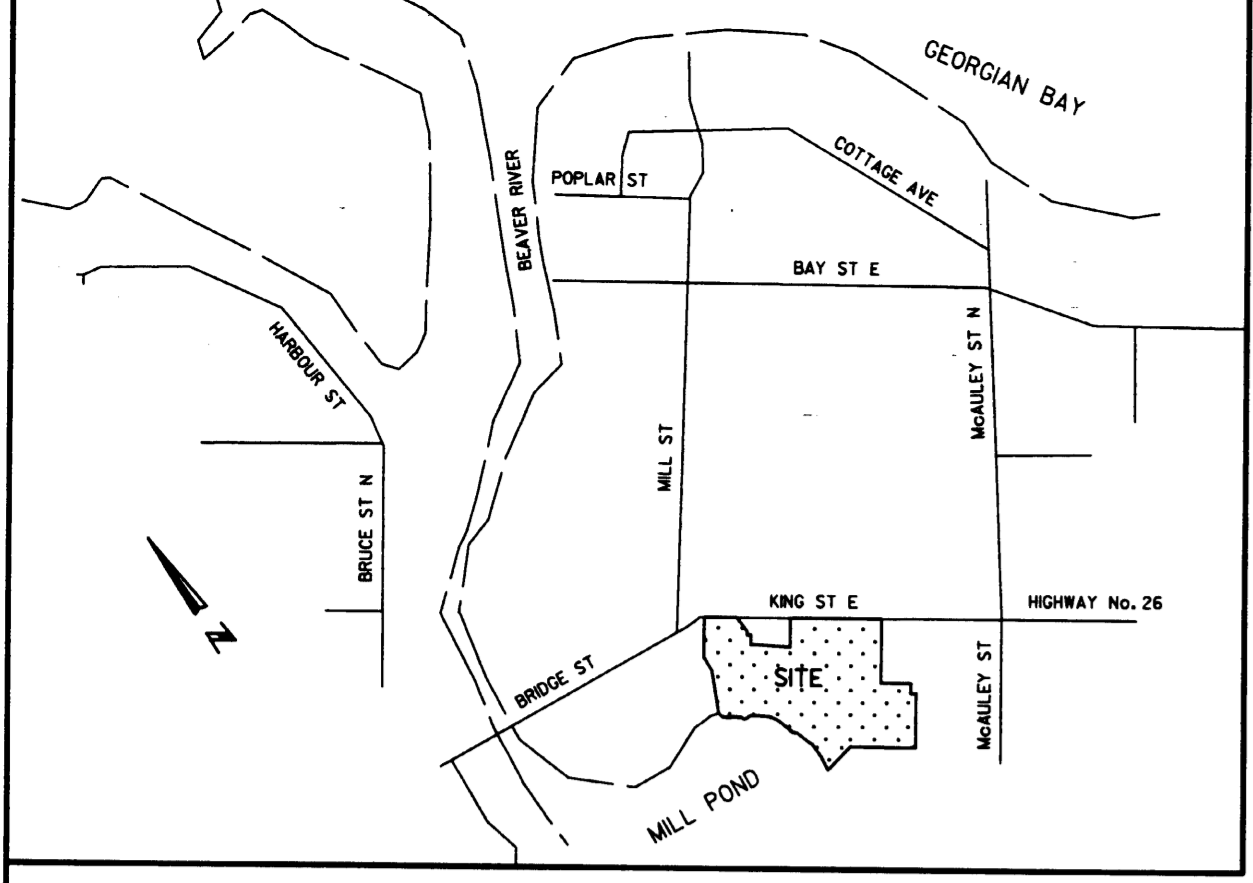


DRAFT PLAN OF CONDOMINIUM OF  
 LOTS 118 AND 120 AND PART OF  
 LOTS 121, 122, 123, 124, 126 AND 153  
 REGISTRAR'S COMPILED PLAN 1023  
 (GEOGRAPHIC TOWN OF THORNBURY)  
 TOWN OF THE BLUE MOUNTAINS  
 COUNTY OF GREY

SCALE 1:250  
 0 1 2 3 4 5 6 7 8 9 10 METRES  
 ZUBEK, EMO, PATTEN & THOMSEN LTD.  
 2010

METRIC  
 DISTANCES ON THIS PLAN ARE IN METRES AND CAN  
 BE CONVERTED TO FEET BY DIVIDING BY 0.3048



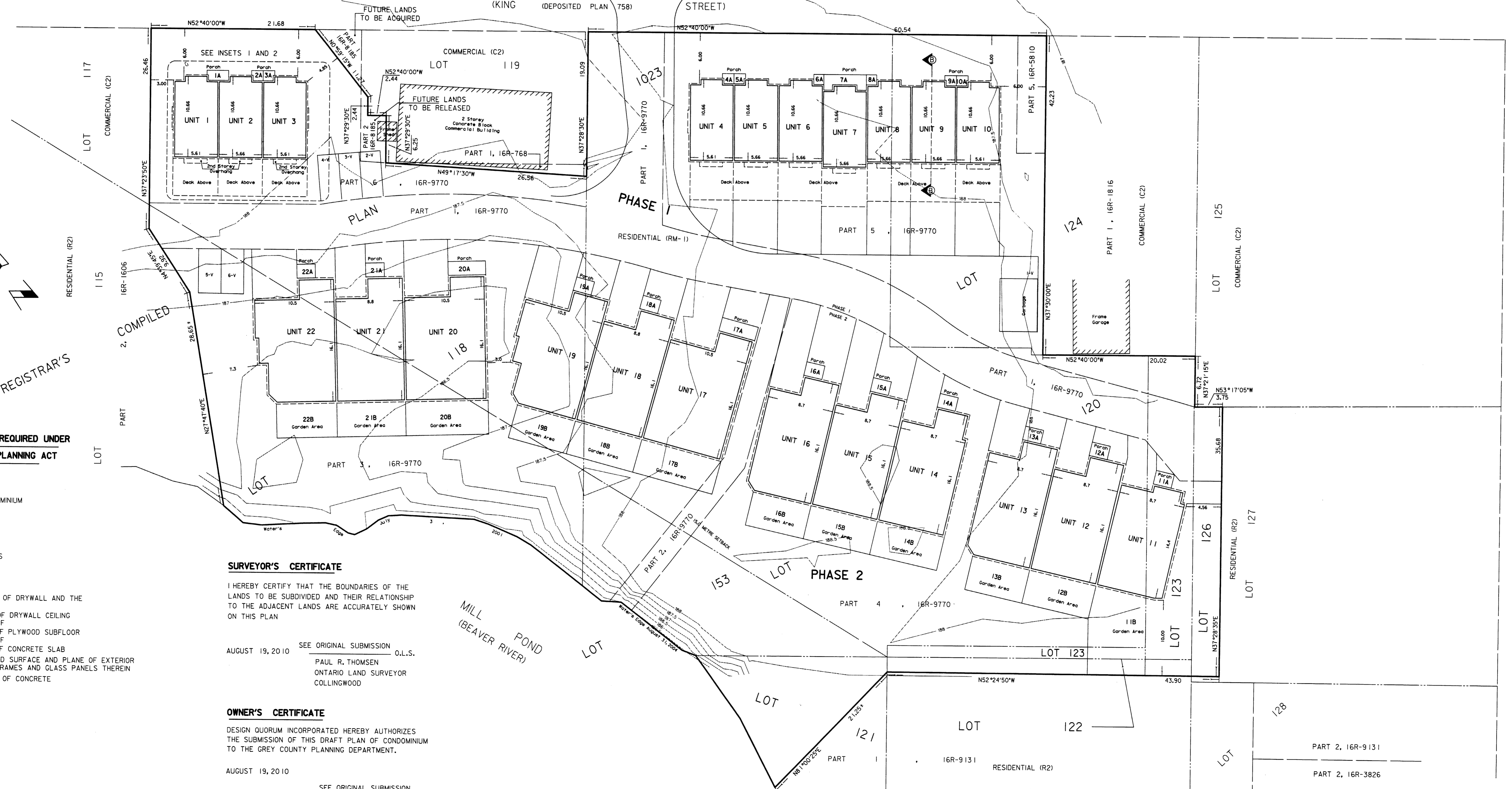
KEY PLAN  
 SCALE 1:5000

INSET 1  
 TO ILLUSTRATE BASEMENT  
 TYPICAL OF UNITS 1 TO 10 INCLUSIVE

INSET 2  
 TO ILLUSTRATE 2nd FLOOR  
 TYPICAL OF UNITS 1 TO 10 INCLUSIVE

SECTION B-B  
 TYPICAL OF UNITS 1 TO 10 INCL.  
 NOT TO SCALE

THE KING'S HIGHWAY No. 26  
 (TOWNPLOT OF THORNBURY)  
 (KING (DEPOSITED PLAN 758) STREET)



ADDITIONAL INFORMATION REQUIRED UNDER  
 SECTION 5(17) OF THE PLANNING ACT

- A. AS SHOWN
- B. AS SHOWN
- C. AS SHOWN
- D. RESIDENTIAL PHASED CONDOMINIUM
- E. AS SHOWN
- F. AS SHOWN
- G. AS SHOWN
- H. MUNICIPAL WATER SUPPLY
- I. SAND AND GRAVEL
- J. AS SHOWN
- K. MUNICIPAL SANITARY SEWERS
- L. AS SHOWN

- NOTES:**
- A. DENOTES UNITSIDE SURFACE OF DRYWALL AND THE EXTENSION THEREOF
  - B. DENOTES LOWER SURFACE OF DRYWALL CEILING AND THE EXTENSION THEREOF
  - C. DENOTES UPPER SURFACE OF PLYWOOD SUBFLOOR AND THE EXTENSION THEREOF
  - D. DENOTES UPPER SURFACE OF CONCRETE SLAB
  - E. DENOTES UNITSIDE UNFINISHED SURFACE AND PLANE OF EXTERIOR DOORS, DOOR AND WINDOW FRAMES AND GLASS PANELS THEREIN
  - F. DENOTES UNITSIDE SURFACE OF CONCRETE

**SURVEYOR'S CERTIFICATE**

I HEREBY CERTIFY THAT THE BOUNDARIES OF THE LANDS TO BE SUBDIVIDED AND THEIR RELATIONSHIP TO THE ADJACENT LANDS ARE ACCURATELY SHOWN ON THIS PLAN

AUGUST 19, 2010 SEE ORIGINAL SUBMISSION O.L.S.  
 PAUL R. THOMSEN  
 ONTARIO LAND SURVEYOR  
 COLLINGWOOD

**OWNER'S CERTIFICATE**

DESIGN QUORUM INCORPORATED HEREBY AUTHORIZES THE SUBMISSION OF THIS DRAFT PLAN OF CONDOMINIUM TO THE GREY COUNTY PLANNING DEPARTMENT.

AUGUST 19, 2010  
 PER SEE ORIGINAL SUBMISSION  
 JONATHAN SPRAWSON  
 AUTHORIZED SIGNING OFFICER  
 I HAVE THE AUTHORITY TO BIND THE CORPORATION

ZUBEK, EMO, PATTEN & THOMSEN LIMITED  
 39 STEWART ROAD  
 COLLINGWOOD, ONTARIO L9Y 4M7  
 PHONE: (705) 445-4910 FAX: (705) 445-5866  
 JOB#: 76-39-4 FOR: DESIGN QUORUM INC.